



Supporting Urban Indian Survivors of Sex Trafficking

Lessons from Project Beacon

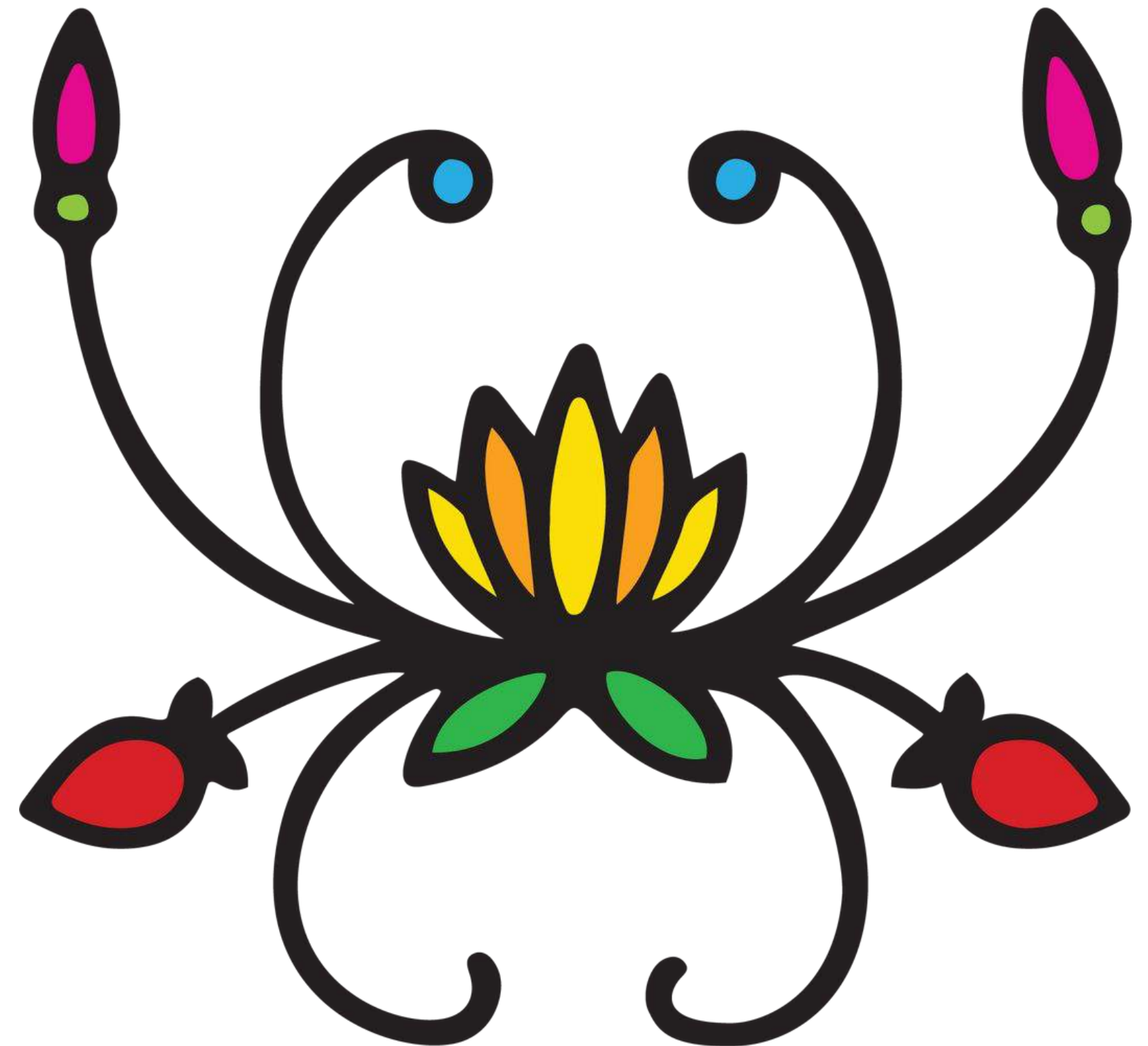
Jolene Engelking

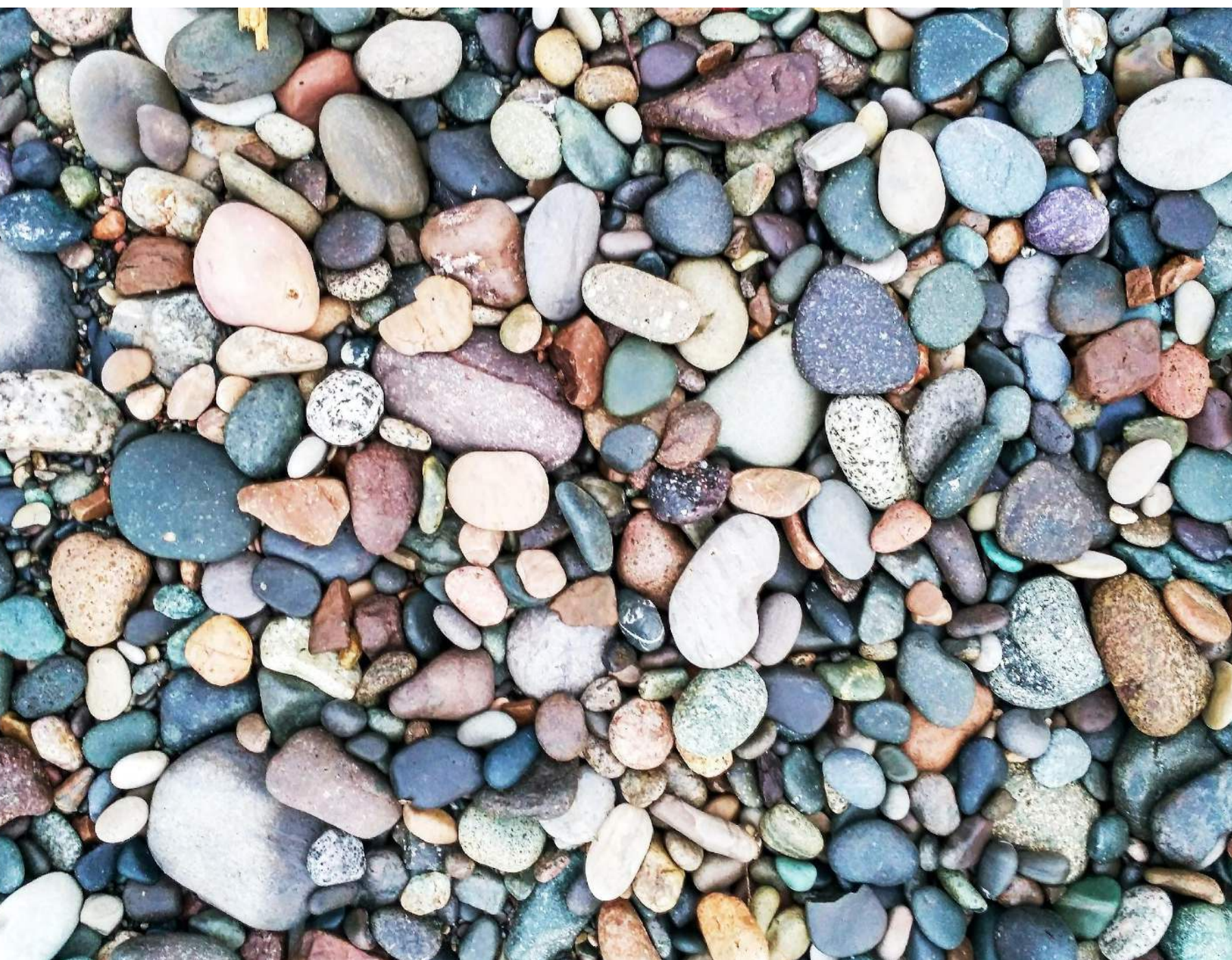
Minnesota Indian Women's Sexual Assault Coalition

This product was supported by grant 2019-VO-GX-K045 awarded by the Office for Victims of Crime, Office of Justice Programs, U.S. Department of Justice. The opinions, findings, and conclusions or recommendations expressed in this product are those of the contributors and do not necessarily represent the official position or policies of the U.S. Department of Justice

What are we doing today?

- Learn about realities of sex trafficking in Urban Communities
- Hear from and about Sex Trafficking Programs for programming tips and what they see in community
- Be in relationship with each other





What Do We Know About Sex Trafficking?

Garden of Truth

Highlights from Study

- 79% had been abused as children (average 4 perpetrators).
- 2/3 of the women had family who attended boarding schools.
- 92% had been raped.
- 84% had been physically assaulted.
- 72% experienced traumatic brain injuries(TBI) in prostitution.
- 98% were either currently or previously homeless.
- 52% had PTSD; 71% had symptoms of dissociation.
- 80% had used outpatient substance abuse services; 77% had used homeless shelters; 65% had used domestic violence services; and 33% had used sexual assault services.
- 92% wanted to escape prostitution.

Garden of Truth:

The Prostitution and Trafficking of Native Women in Minnesota

By
Melissa Farley
Nicole Matthews
Sarah Deer
Guadalupe Lopez
Christine Stark
Eileen Hudon

Research by
Minnesota Indian Women's
Sexual Assault Coalition
and
Prostitution Research
& Education





OVC Project Beacon

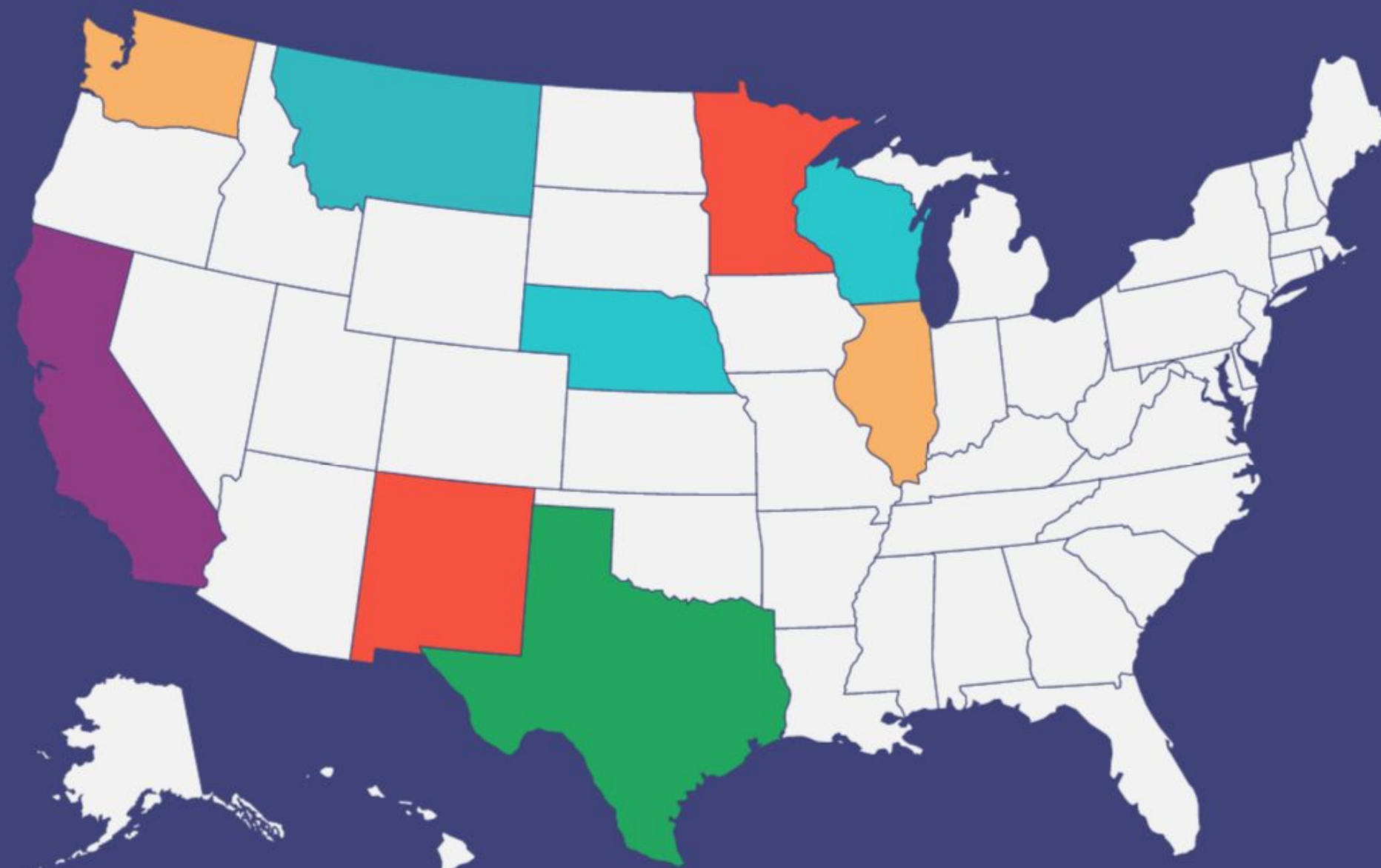
OFFICE FOR VICTIMS OF CRIME (OVC)

The overarching goal of this program is to increase the quantity and quality of victim-centered services available to assist American Indian and Alaska Native (AI/AN) victims of human trafficking in urban areas.

Core Functions

- develop or enhance their organizational capacity to provide services to urban AI/AN victims of human trafficking,
 - develop and sustain collaborative partnerships,
 - conduct community outreach and awareness activities, and
 - provide training to other stakeholders on how to meet the needs of urban AI/AN victims of human trafficking.
-

Project Beacon Grantees



FY16

FY 19

FY 19 & 22

FY 16,19, & 22*

FY22



**What is unique
about Urban Indian
Communities?**

URBAN COMMUNITIES

The majority of AI/AN people live outside reservations. Project Beacon focuses on "urban" centers, which are vastly different from each other.

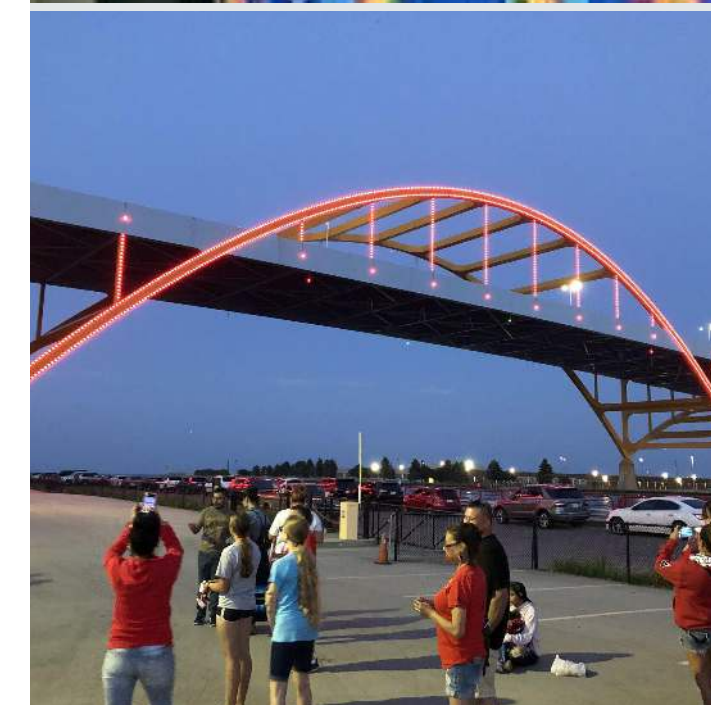
EXTENDED TRIBAL TIES

Opportunities and difficulties with having people come from multiple tribes, including jurisdictional and multi-cultural considerations.

"Pipelines" of trafficking from tribes to urban center (and reverse).

CULTURAL CONNECTION

Survivors may need access to different cultural healing opportunities than what you are aware of (or is available to you) in your local community.



Urban Indians

CONNECTION AND NEW WAYS OF BEING

"WE FOUND ONE ANOTHER, STARTED INDIAN CENTERS,
BROUGHT OUT OUR FAMILIES AND POWWOWS, OUR DANCES,
OUR SONGS, OUR BEADWORK ... WE MADE ART AND WE MADE
BABIES AND WE MADE WAY FOR OUR PEOPLE TO GO BACK
AND FORTH BETWEEN RESERVATION AND CITY. WE DID NOT
MOVE TO CITIES TO DIE. THE SIDEWALKS AND STREETS, THE
CONCRETE, ABSORBED OUR HEAVINESS."

- THERE THERE, TOMMY ORANGE

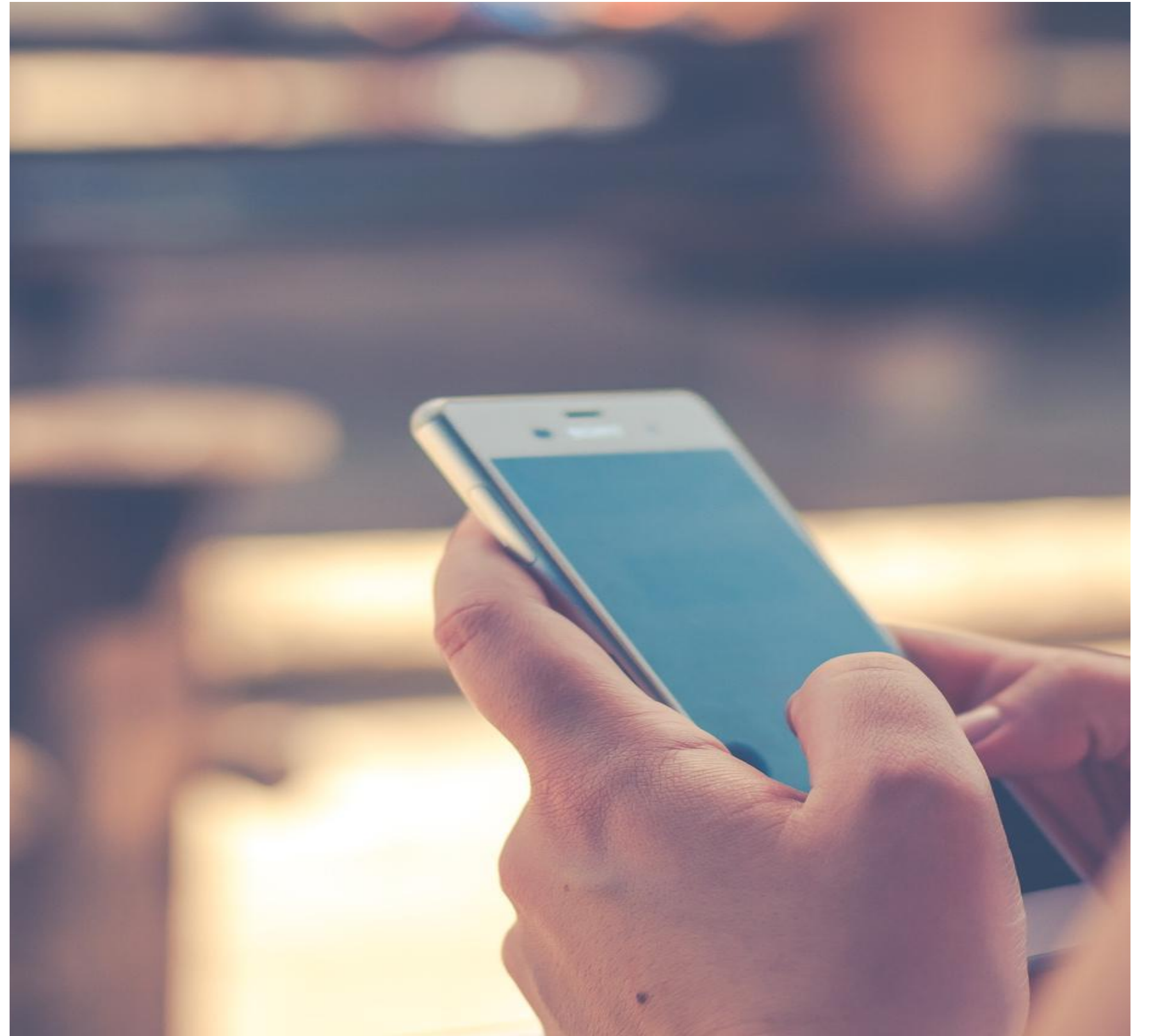




What does Human Trafficking like in Urban Spaces?

INDIVIDUAL

TECHNOLOGY



INDIVIDUAL

Youth



Systems

JURISDICTION



Individual/Community

INVISIBILITY



Community

EVENTS/TOURISM/ SEASONAL WORK





How can you
support survivors
in Urban
Communities?

WHAT SURVIVORS NEED

Full Medicine Wheel of Support



Partnerships

UNDERSTANDING
THE FULL PICTURE



CONNECTION

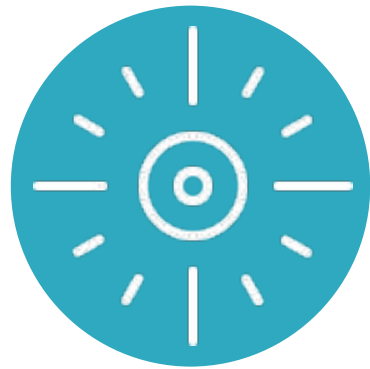
WELCOMING HOME
& CREATING NEW





Trauma-Informed

What does that mean for survivors in your program?



Survivor-Centered

What are strengths in your program to have make that possible?



Everyone has a Part

How are staff informed of changes? How will you support each other in the learning process?



Culturally Appropriate

How can you discern that? How to provide support for various Tribal affiliations

Supporting Survivors as a Program

CLOSING

-
- Every individual & each community are unique
 - Knowledge, resources, and relationships
 - We all play a role

Chi'Miigwech!
Wopila tanka!
Thank you!

WWW.MIWSAC.ORG

EMAIL ADDRESSES

jengelking@miwsac.org

sbeaumont@miwsac.org