



amy_consulting

Human Trafficking

The information and discussion in this presentation is graphic. It touches on child abuse, crime victims, historical trauma, missing and murdered indigenous, sexual assault, and human trafficking. Participant discretion is advised.

Autumn Smith-Amy
Owner
amy_consulting

Presenter Biography



Autumn Smith Amy is a survivor advocate that provides holistic advocacy, barrier busting, and crisis case management to high risk populations in Alaska. Ms. Smith-Amy consults on the national and international level regarding child welfare, human trafficking, human rights, Tribal Sovereignty and complex victimization

MISSION amy_consulting



amy_consulting seeks to bridge the barriers Alaskan residents of need have in supporting the success of their families through plain language holistic law based advocacy services.

amy_consulting operates Northwest Regional Relative and Kinship Providers; the largest BIPOC led virtual support group for families in CINA cases or supporting children of CINA cases in Alaska and has recently expanded to 5 Northwest States.

**Northwest Regional Relative and Kinship
Providers**

The AMP Model



Traffickers undertake ACTION using MEANS for the PURPOSE of exploiting people.

Human Trafficking Defined

FORCE

- Physical harm
- Beatings
- Sexual assault
- Physical restraint
- Confinement
- Isolation

FRAUD

False promises of:

- Employment
- Working conditions
- Wages
- A better life
- Relationship

COERCION

- Psychological Abuse
- Threats against victim or another person
- Manipulation
- Physical and Psychological Isolation
- Threat to report victim to immigration authorities or law enforcement
- Document confiscation
- Blackmail



Higher Risk of Victimization



POLARIS PROJECT
I M A G I N E F R E E D O M

Have an unstable living situation

Have a history of Domestic Violence Victimization

Have a caregiver or family member who has a substance misuse issue

Are runaways or involved in juvenile justice or foster care system

Are undocumented immigrants

Are facing poverty or economic need and struggle to meet their basic needs

Have a history of sexual abuse

Have a substance misuse issue

Have a capacity challenge (i.e. mental illness and/or developmental disability)

Alaska Trafficking

2017 Covenant House
Study

Victims of human trafficking

Nationally

From a 10-city survey of homeless youths

Youths identified as victims of human trafficking

19%

In Anchorage

Youths identified as victims of human trafficking

28%

Women interviewed were trafficked for sex

27%

Men interviewed were trafficked for sex

17%

- Labor Trafficking:
 - Exploitation of Minor Labor Laws
 - Exploitation of rural elders and men seeking job opportunities in Anchorage
 - Exploitation of homeless in shelter or encampment in Anchorage
 - Exploitation of those in need of housing
- Sex Trafficking:
 - Exploitation of those without basic needs met
 - Exploitation of those with capacity challenges such as substance misusers, mentally ill, developmentally disabled
 - Exploitation of Adult Sex Workers

7 Steps of Nature and Scope



Core Competencies:

- Trauma Informed Approach
 - Understand the Nature and Scope of Trafficking
 - Evaluate and Identify the Risk of Trafficking
 - Evaluate the individual needs of victims and those at risk of victimization
 - Provide victim centered care
 - Use legal and ethical standards
- Integrate trafficking prevention into all programming, practice, and systems of care.

Disclosure is not the Goal: Evaluate, Identify, Prevent



NATIONAL HUMAN TRAFFICKING TRAINING AND TECHNICAL ASSISTANCE CENTER

National Human Trafficking Training and Technical Assistance Center

Adult Human Trafficking Screening Tool

8 Questions

“Yes” to any of the 8 identifies the person as current, past, or at risk for human trafficking.

https://nhttac.acf.hhs.gov/sites/default/files/2018-07/adult_human_trafficking_screening_tool_and_guide.pdf

Needs Assessment



Gathering data should be about identifying needs specific to your Region. Developing a needs assessment off of the data obtained is imperative for funding future preventative efforts.

Trafficking Victims are victims of a crime and as such best practices guides such as the Department of Justice Best Practices Guides should be utilized to fuel your regions collection of data in a proactive, dignified, and secure manner. An example is available for you to download in the comments box.

https://ovc.ojp.gov/sites/g/files/xyckuh226/files/pubs/InnovativePractices/Practices_Best%20practices%20guidelines-508.pdf

Mandatory Reporting and Universal Screening

Human Trafficking Victims are At Risk Adults and Children

Universal Screening Helps Victims Get the Protection and Services They Need

Mandatory Reporters in Alaska are required to report any signs of abuse and neglect of children and abuse, neglect, and **exploitation** of adults.

90% of unaccompanied street youth (runaways) are accosted for human trafficking. All unaccompanied youth are at high risk for abuse, neglect, and exploitation.

What can you do in Alaska?

Advocate for Universal Trafficking Screenings amongst all service providers

Advocate for specificity regarding runaways in Mandatory reporting

Advocate for specificity regarding exploitation in Mandatory reporting

amy_consulting uses the Social-Ecological Model of Prevention



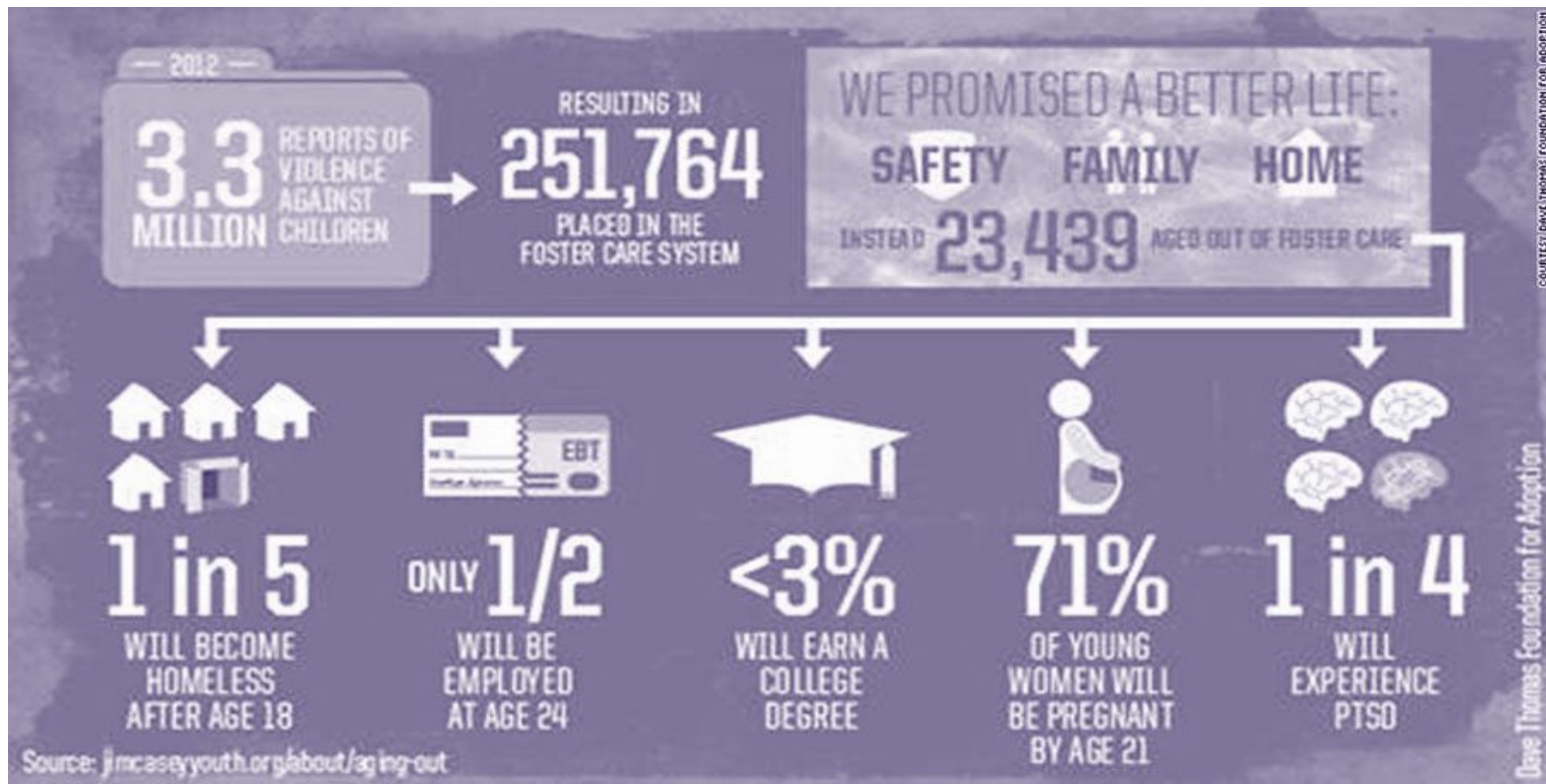
The Individual level identifies biological and personal history factors that increase the likelihood of becoming a victim or perpetrator of violence.

The Relationship level examines close relationships that may increase the risk of experiencing violence as a victim or perpetrator.

The community level explores the setting, such as schools, workplaces, and neighborhoods, in which social relationships occur and seeks to identify the characteristics of these settings that are associated with becoming victims or perpetrators of violence.

The societal level looks at the broad societal factors that help create a climate in which violence is encouraged or inhibited.

Special Considerations Foster Youth



60% of children in foster care or part of the large child welfare system are child sex trafficking victims

Special Considerations for LGBTQ



Only 20 percent of homeless youth are LGBT in the United States, and 58.7 percent of them are sexually exploited

Adult Sex Worker Special Considerations

**SEX WORKER RIGHTS ARE
HUMAN RIGHTS**

“ In too many places around the world sex workers are without protection of the law, and suffering awful human rights abuses. This situation can never be justified. Governments must act to protect the human rights of all people, sex workers included. Decriminalization is just one of several necessary steps governments can take to ensure protection from harm, exploitation and coercion,...”
Amnesty International

Consent

CONSENT



Freely given

Reversible

Informed

Enthusiastic

Specific

Media and Imagery

1. Accuracy and fact-based reporting.
2. Independence.
3. Impartiality.
4. Humanity.
5. Accountability and transparency.



Avoid use of pictures or creating video images that pander to sensationalism, intrusion, and voyeurism.

Always ask permission to film and to take pictures of individuals,

Avoid using sexualised images and avoid pictures that reflect a cliché

Avoid explicit images of violence

Intersectionality



amy_consulting Partnerships



FOSTERING
CHANGE
NETWORK
FOUNDATION



ADMINISTRATION FOR
CHILDREN & FAMILIES

RODDENBERRY
FELLOWSHIP



Who should I contact?



NATIONAL
HUMAN
TRAFFICKING
HOTLINE

1-888-373-7888



amy_consulting



**1120 Huffman Road Suite 24 Box 405
Anchorage, Alaska 99507
907,744.7003**

<https://www.facebook.com/amyconsulting907>

Alaska Relative and Kinship Providers

<https://www.facebook.com/groups/1378468678989064>

